

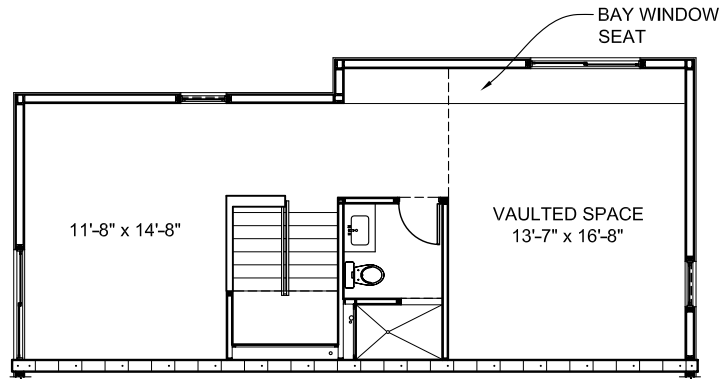


Portland 38

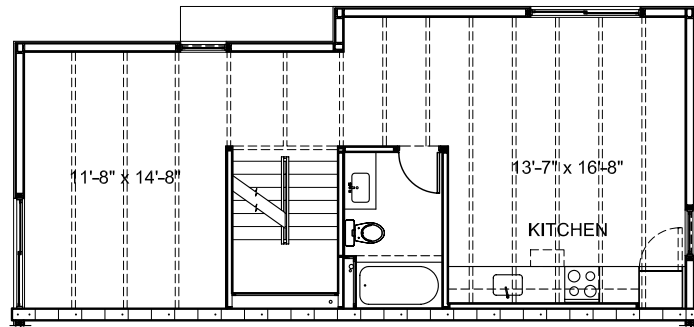
727 E. Portland Street
Phoenix, AZ 85006
Portland St. just East of 7th St.

Type A (4 total units)

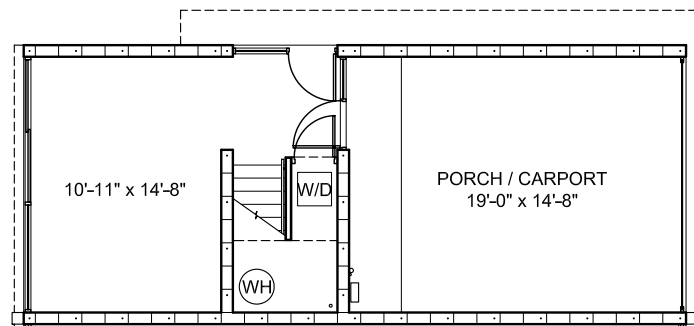
- 2 Bedroom + Office/Den (flex space)
- 2 Bathrom
- 1 Car Garage
- 1,606 GSF w/303 GSF Garage



Third Floor



Second Floor



First Floor

Sales by:
Center City Realty
602.254.1500
www.portland38.com

